

TYPE 7 design, 2 units



电力	暖通	给排水
结构	动力	
暖通		
给排水		
结构		
动力		

Copyright 2016.
 本图版权归浙江普天集成房屋有限公司所有，基本工图中本图的所有权归浙江普天集成房屋有限公司所有。
 THE OWNERSHIP OF THE COPYRIGHT IN THIS DRAWING REMAINS BY ZHEJIANG PUTIAN INTEGRATED HOUSING CO., LTD. WRITTEN CONSENT MUST BE OBTAINED BEFORE ANY USE OR REPRODUCTION OF THE DRAWING.

版本	修改内容	日期	负责人
Rev.	Description	Date	who send



Zhejiang Putian integrated housing Co., Ltd.
 Hangzhou Zhongyu Architecture Design (Institute) Co., Ltd.

证书等级	
证书编号	

合作设计单位
 Cooperative Designer

工序	签名	日期
Process	Signature	Date
审定		
Authorized By		
审核		
Verified By		
项目负责人		
Process		
校对人		
Checked By		
设计		
Designed By		
制图		
Drawn By		

执业签章
 Engineer Signature

出图签章
 Engineer Signature

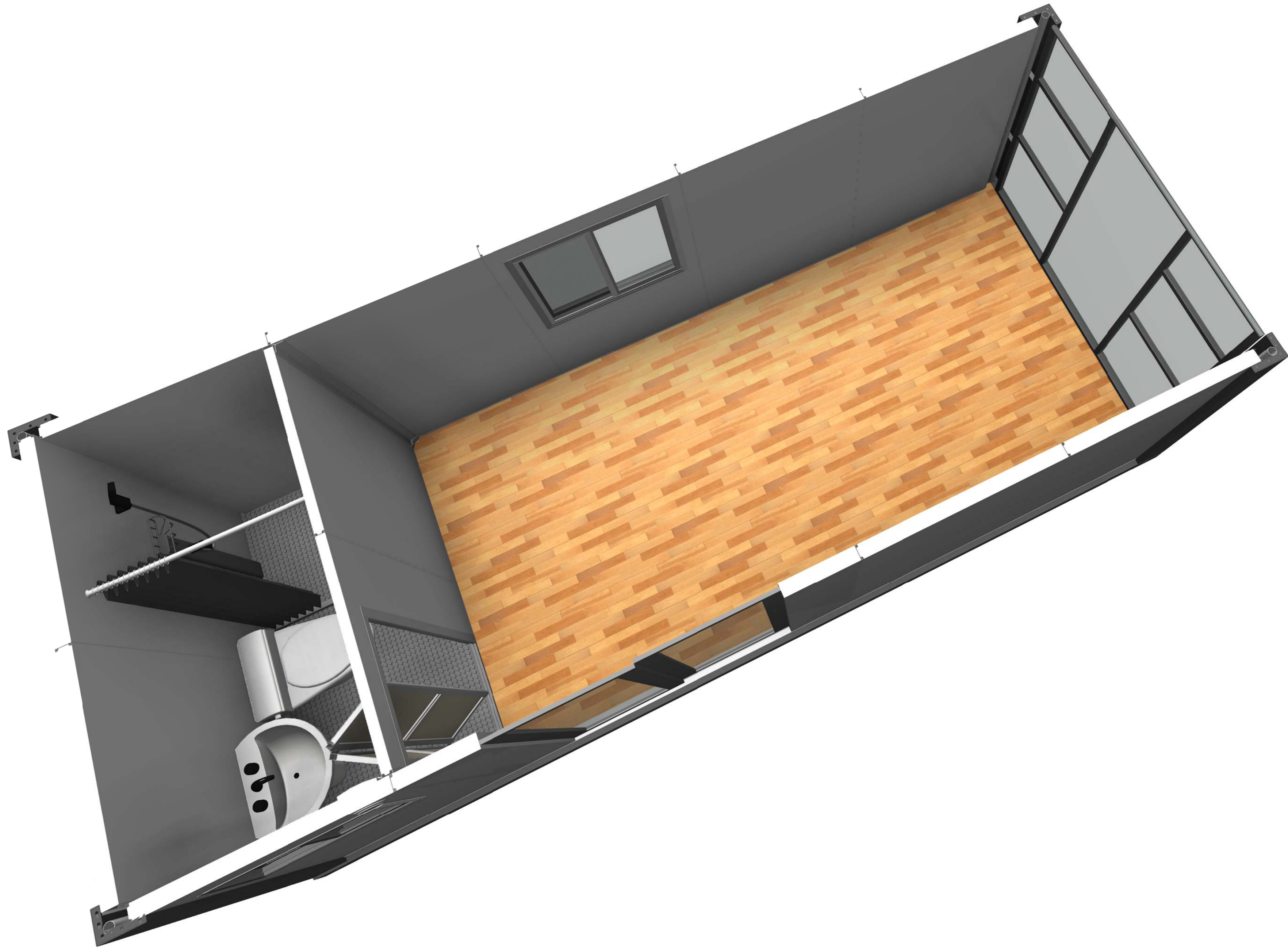
项目名称
 Project Name
 澳大利亚-集装箱

题名
 Title
 3D

工程编号	PT220307	专业	JZ
比例		图号	J0-1

未盖技术出图章 本图纸无效
 This drawing is valid only after being stamped and
 This drawing is invalid without the technical drawing stamp.

电力	暖通	动力
结构	给排水	
暖通		
给排水		
结构		
电力		



Copyright 2016.
 本图版权归浙江普天集成房屋有限公司所有，基本工图中本图的所有权均归本公司所有。
 THE OWNERSHIP OF THE COPYRIGHT IN THIS DRAWING REMAINS BY ZHEJIANG PUTIAN INTEGRATED HOUSING CO., LTD. WRITTEN CONSENT MUST BE OBTAINED BEFORE ANY USE OR REPRODUCTION OF THE DRAWING.

版本 Rev.	修改内容 Description	日期 Date	负责人 who send

PTH
 Zhejiang Putian integrated housing Co., Ltd.
 Hangzhou Zhongyu Architecture Design (Institute) Co., Ltd.

证书等级
 证书编号

合作设计单位
 Cooperative Designer

工序 Process	签名 Signature	日期 Date
审定 Authorized By		
审核 Verified By		
项目负责人 Process		
校对 Checked By		
设计 Designed By		
制图 Drawn By		

执业印章
 Engineer Signature

出图印章
 Engineer Signature

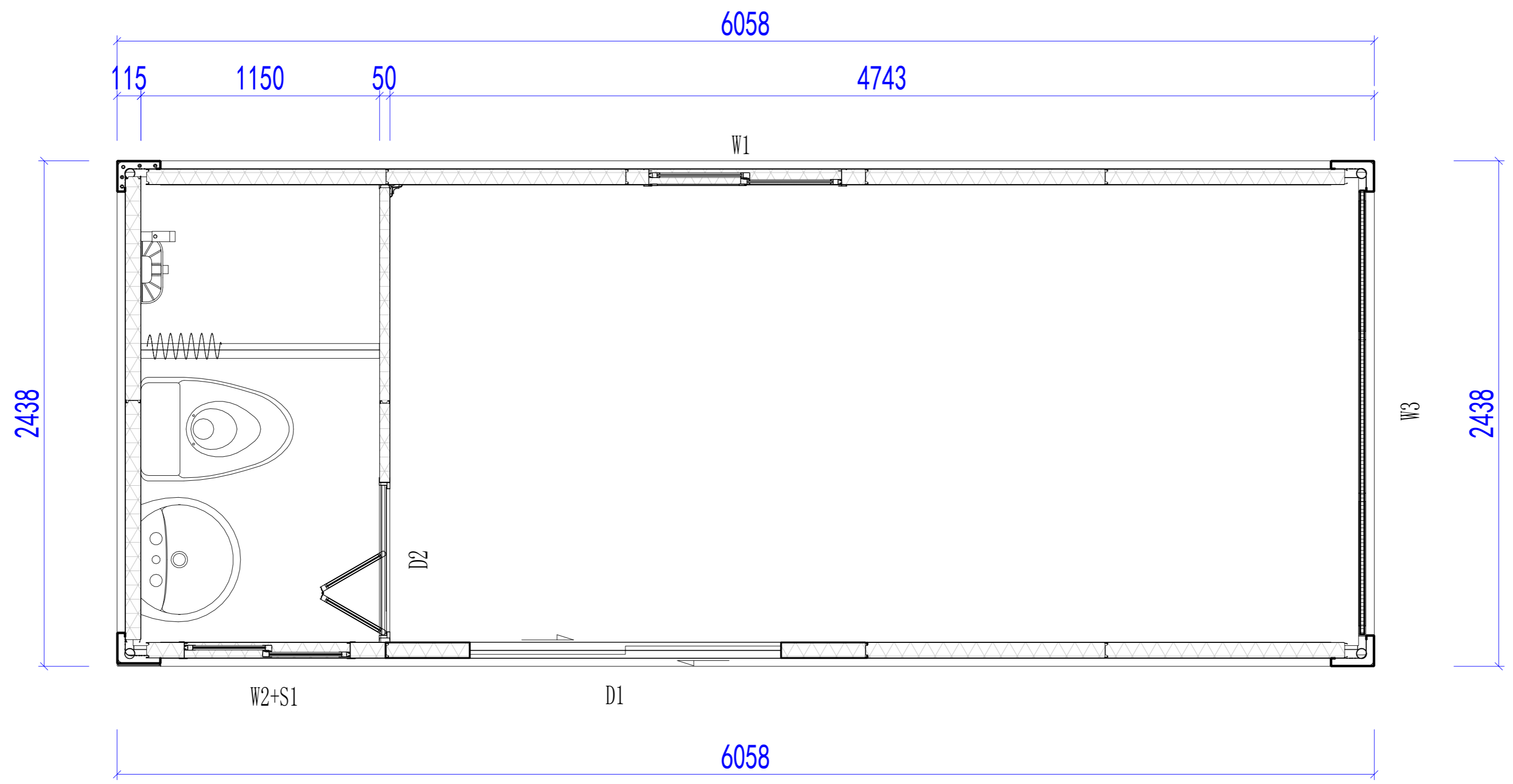
项目名称
 Project Name
澳大利亚-集装箱

题名
3D

工程编号 No.	PT220307	专业 Prof.	JZ
比例 Scale		图号 Fig.	J0-3

未盖技术出图章 本图纸无效
 This drawing is valid only after being stamped and
 This drawing is invalid after being stamped and

电力	暖通	动力
结构	给排水	
暖通		
给排水		
结构		
电力		



LAYOUT PLAN

Copyright 2016.
 本图版权归浙江普天集成房屋有限公司所有，基本工图中本图的所有权均归本公司所有。
 THE OWNERSHIP OF THE COPYRIGHT IN THIS DRAWING REMAINS BY ZHEJIANG PUTIAN INTEGRATED HOUSING CO., LTD. WRITTEN CONSENT MUST BE OBTAINED BEFORE ANY USE OR REPRODUCTION OF THE DRAWING.

Rev.	Description	Date	Who send

PTH
 Zhejiang Putian integrated housing Co., Ltd.
 Hangzhou Zhonggu Architecture Design (Institute) Co., Ltd.

证书等级
 证书编号

合作设计单位
 Cooperative Designer

工序 Process	签名 Signature	日期 Date
审定 Authorized By		
审核 Verified By		
项目负责人 Process		
校对人 Checked By		
设计 Designed By		
制图 Drawn By		

执业印章
 Engineer Signature

出图印章
 Engineer Signature

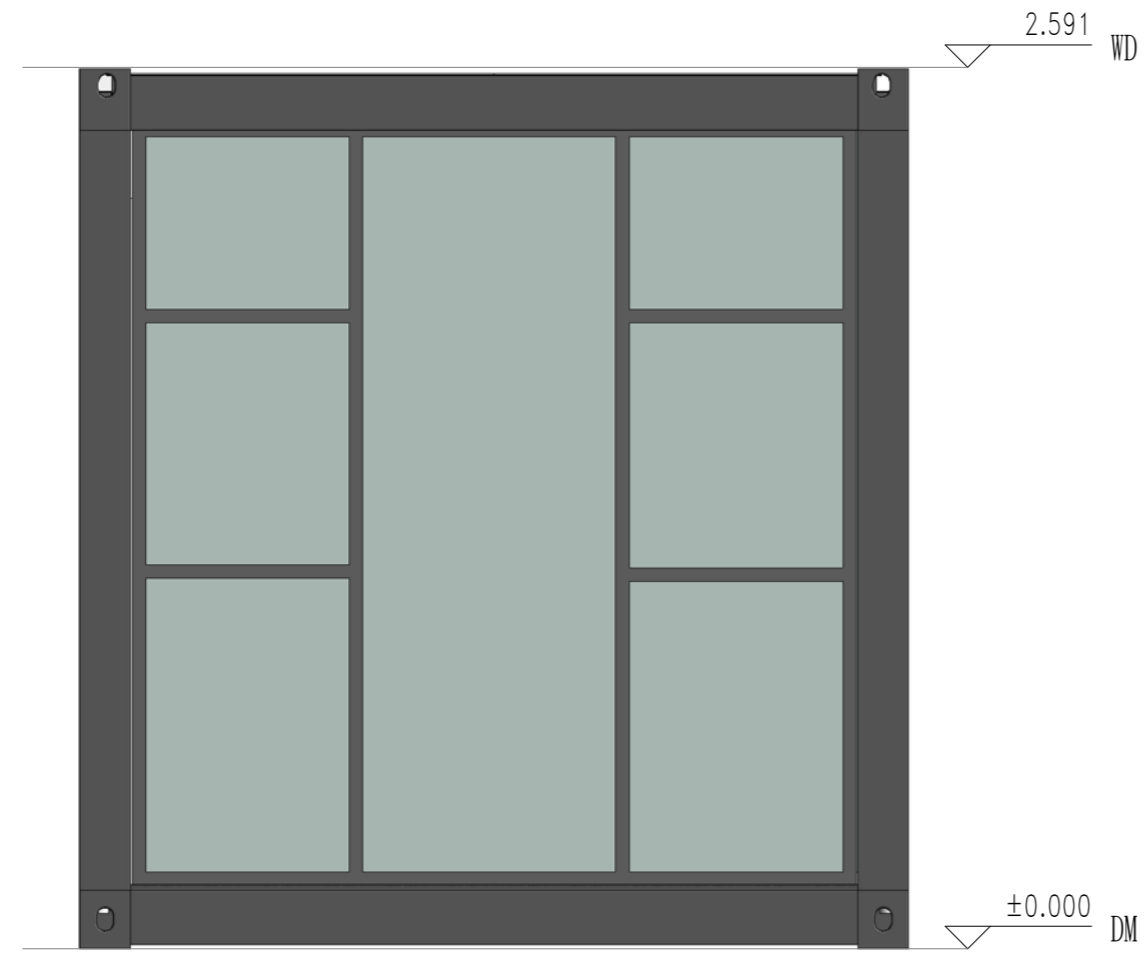
项目名称
 Project Name
澳大利亚-集装箱

题名
平面布置图

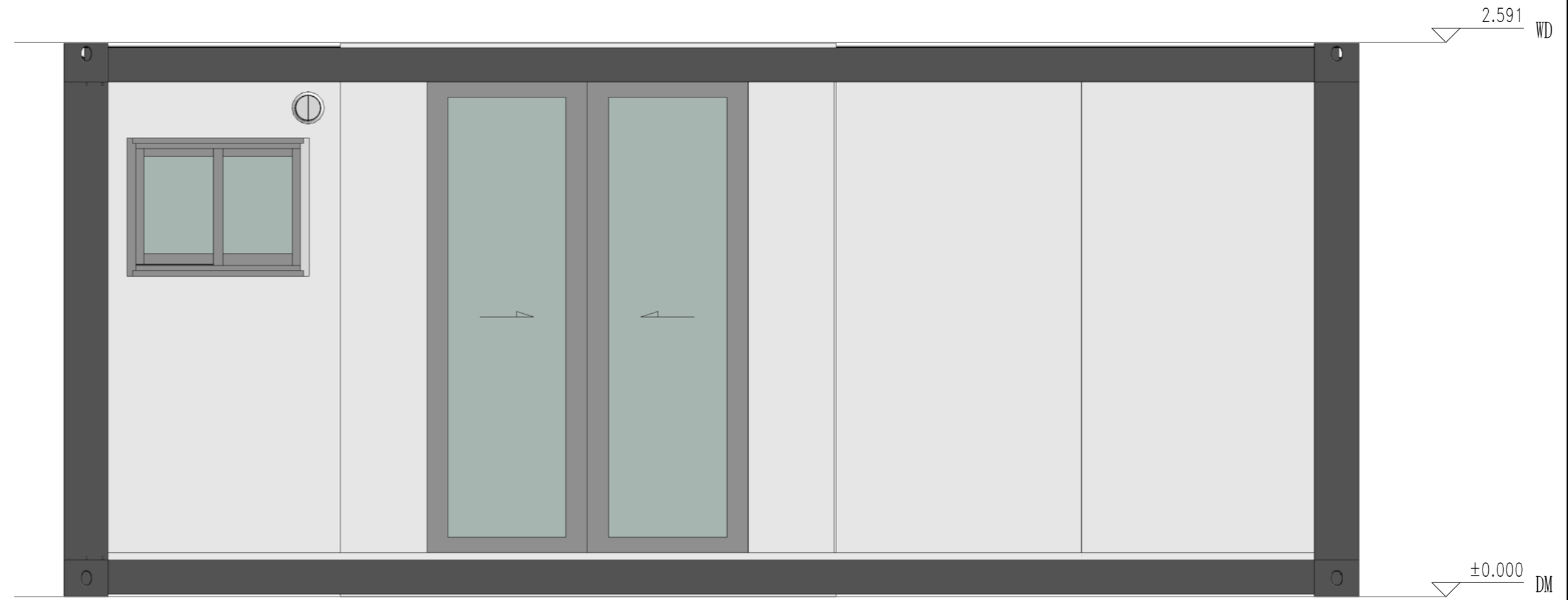
工程编号 No.	PT220307	专业 Prof.	JZ
比例 Scale	1:50	图号 Fig. No.	J0-4

未盖技术出图章 本图纸无效
 This drawing is valid only after being stamped and signed.

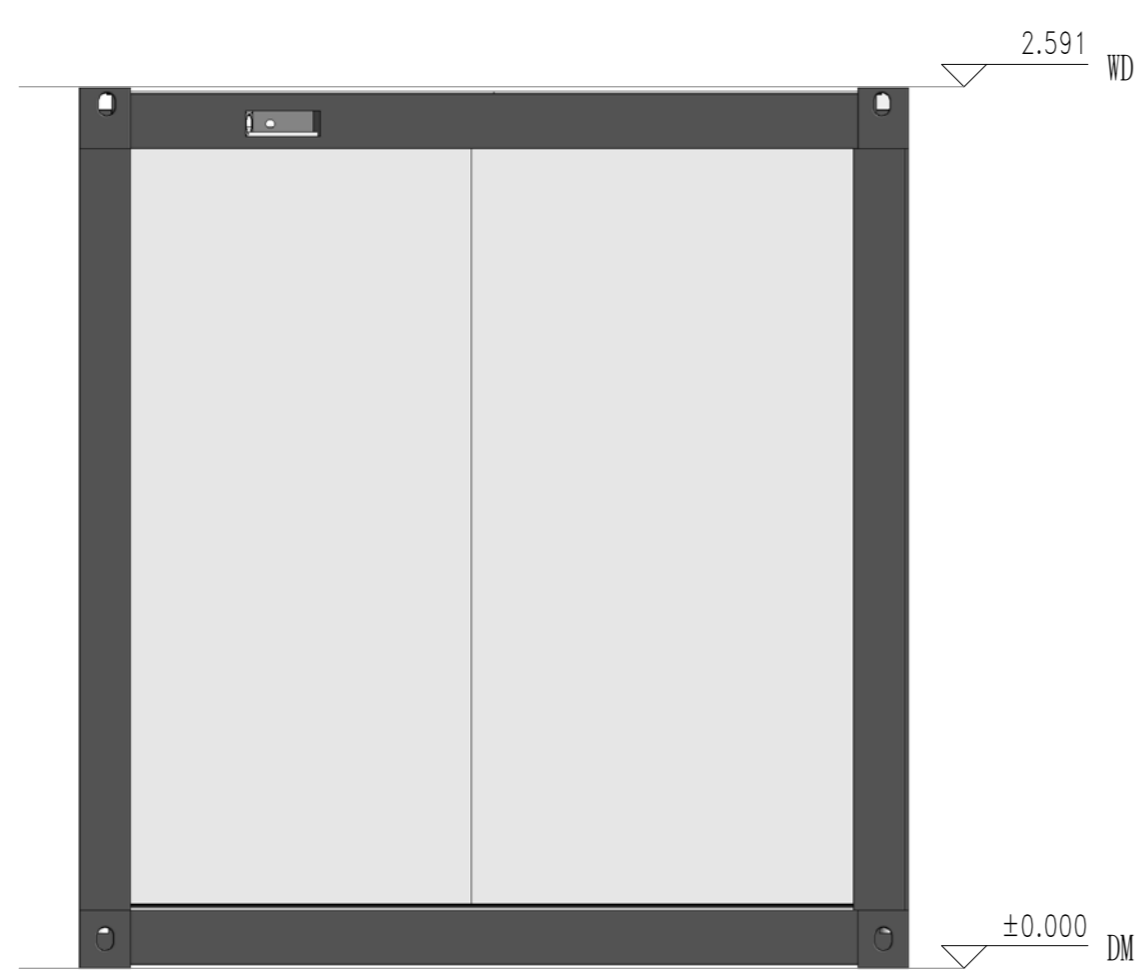
电力	照明	动力
暖通	给排水	
结构		
密封		



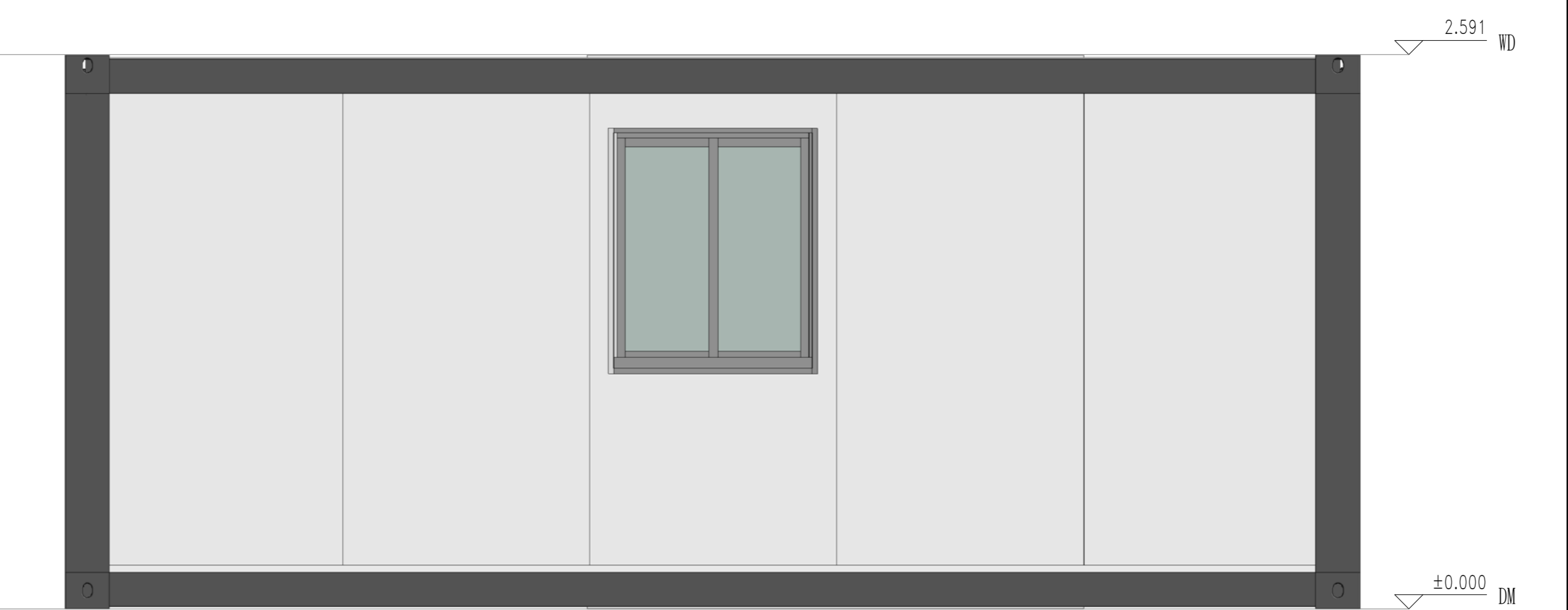
EAST



SOUTH



WEST



NORTH

Copyright 2016.
 本图版权归浙江普天集成房屋有限公司所有，基本工图中本图的技术内容均受法律保护。
 THE OWNERSHIP OF THE COPYRIGHT IN THIS DRAWING REMAINS BY ZHEJIANG PUTIAN INTEGRATED HOUSING CO., LTD. WRITTEN CONSENT MUST BE OBTAINED BEFORE ANY REUSE OR REPRODUCTION OF THE DRAWING.

版本	修改内容	日期	负责人
Rev.	Description	Date	who send



Zhejiang Putian integrated housing Co., Ltd.
 Hangzhou Zhonggu Architecture Design (Institute) Co., Ltd.

证书等级	
证书编号	

合作设计单位
 Cooperative Designer

工序	签名	日期
Process	Signature	Date
审定		
Authorized By		
审核		
Verified By		
项目负责人		
Process		
校对		
Checked By		
设计		
Designed By		
制图		
Drawn By		

执业印章
 Engineer Signature

出图印章
 Engineer Signature

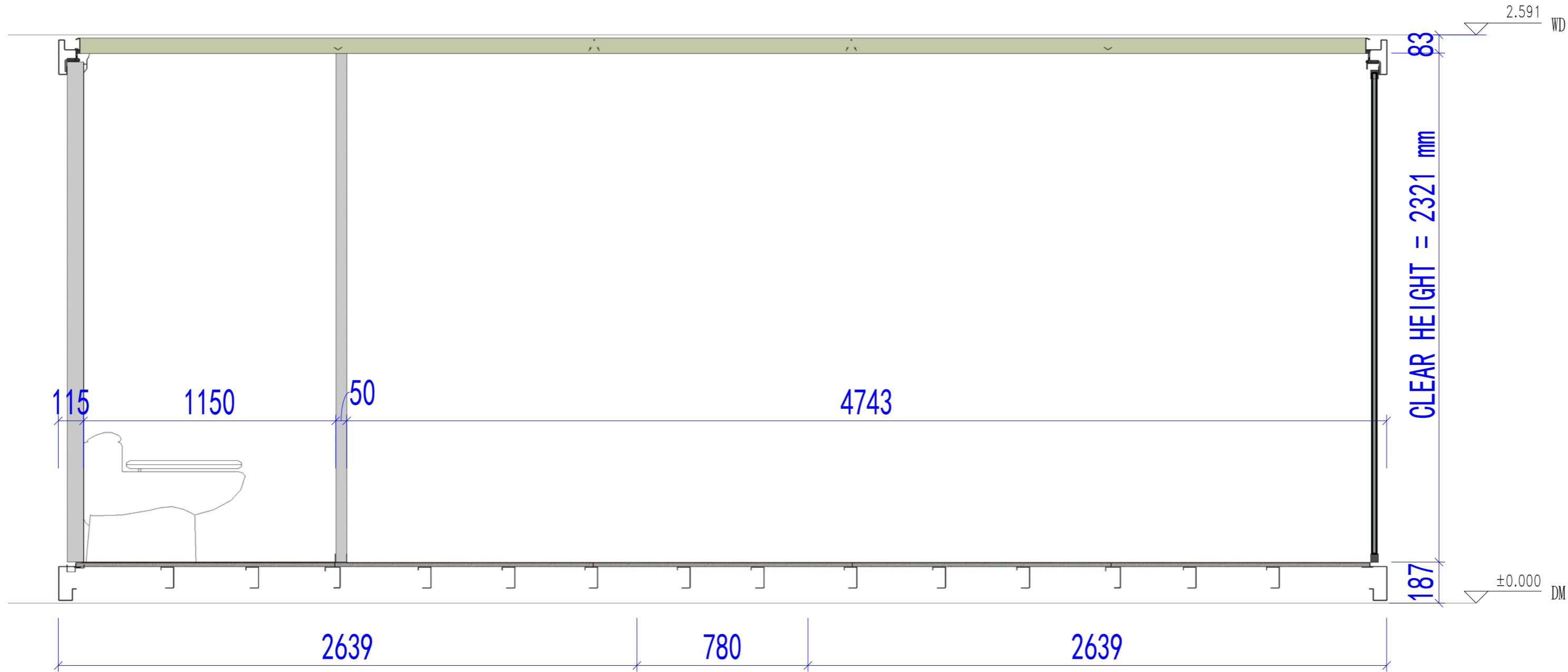
项目名称
 Project Name
 澳大利亚-集装箱

题名
 Title
 立面布置图

工程编号	PT220307	专业	JZ
图号		图名	J0-5

未盖技术出图章 本图纸无效
 This drawing is valid only after being stamped and signed.

电力	暖通	动力
结构	给排水	
会	密	



SECTION PLAN

Copyright 2016.
 本图版权归浙江普天集成房屋有限公司所有，基本工图中本图的技术内容均受法律保护。
 THE OWNERSHIP OF THE COPYRIGHT IN THIS DRAWING REMAINS BY ZHEJIANG PUTIAN INTEGRATED HOUSING CO., LTD. WRITTEN CONSENT MUST BE OBTAINED BEFORE ANY USE OR REPRODUCTION OF THE DRAWING.

Rev.	Description	Date	Who send
------	-------------	------	----------

PTH

Zhejiang Putian integrated housing Co., Ltd.
 Hangzhou Zhonggu Architecture Design (Institute) Co., Ltd.

证书等级	
证书编号	

合作设计单位
 Cooperative Designer

工序 Process	签名 Signature	日期 Date
审定 Authorized By		
审核 Verified By		
项目负责人 Process		
校对 Checked By		
设计 Designed By		
制图 Drawn By		

执业印章
 Engineer Signature

出图印章
 Engineer Signature

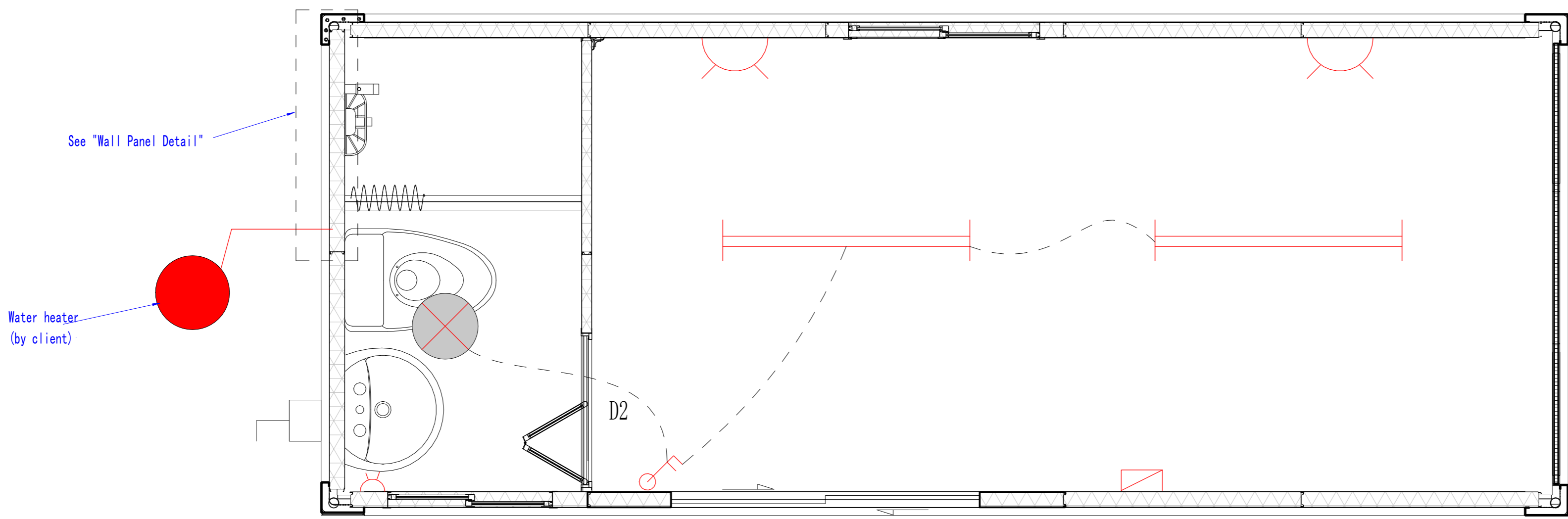
项目名称
 Project Name
澳大利亚-集装箱

题名
剖面布置图

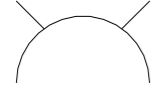

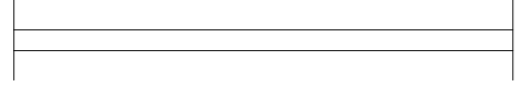
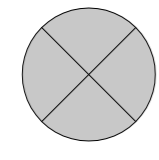
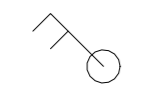
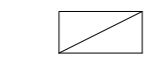
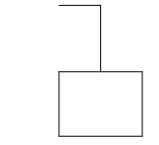
工程编号 PT220307	专业 JZ
比例	图号 J0-6

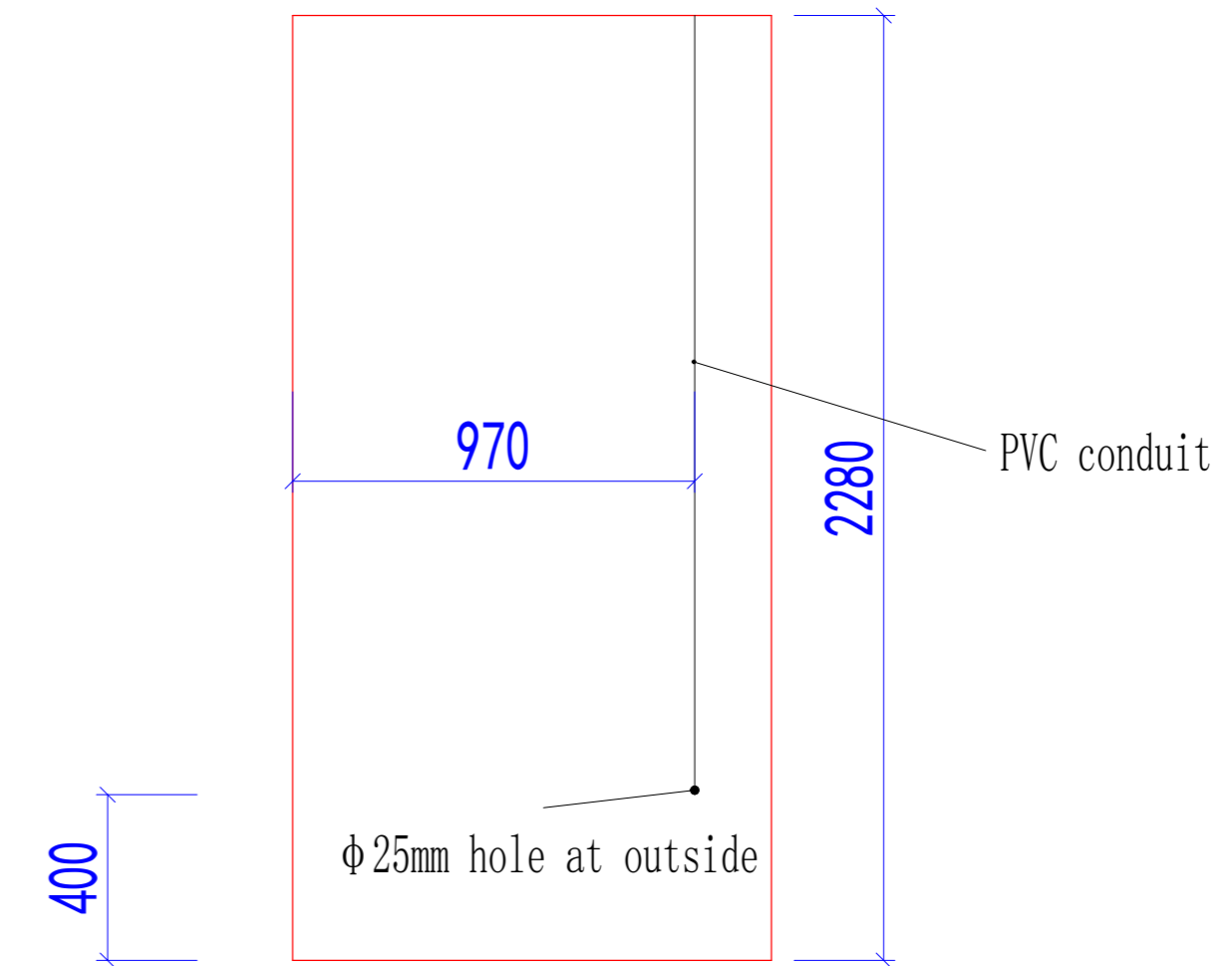
未盖技术出图章 本图纸无效
 This drawing is valid only after being stamped and

电力	照明	动力
结构		
给排水		
暖通		
其他		



ELECTRICAL PLAN

-  Socket, H=300mm (only socket box) , horizontal
-  Toilet socket, H=1200mm, (only socket box)with water-proof cover , horizontal
-  1200mmLED light,with earth connection
-  Round ceiling lamp, with earth connection
-  Double control switch, H=1200mm (only switch box) , vertical
-  Distribution box (by client)
-  Outdoor power connection (pre-assembly)



Wall Panel Detail

Copyright 2016.
 本图版权归浙江普天集成房屋有限公司所有，基本工图中本图的所有权归浙江普天集成房屋有限公司所有。
 THE OWNERSHIP OF THE COPYRIGHT IN THIS DRAWING REMAINS WITH ZHEJIANG PUTIAN INTEGRATED HOUSING CO.,LTD. WRITTEN CONSENT MUST BE OBTAINED BEFORE ANY REUSE OR REPRODUCTION OF THE DRAWING.

Rev.	Description	Date	Who send

PTH
 Zhejiang Putian integrated housing Co., Ltd.
 Hangzhou Zhonggu Architecture Design (Institute) Co., Ltd.

证书等级: _____
 证书编号: _____
 合作设计单位: _____

工序	签名	日期
Process	Signature	Date
审定		
Authorized By		
审核		
Verified By		
项目负责人		
Process		
校对		
Checked By		
设计		
Designed By		
制图		
Drawn By		
执业签章		
Engineer Signature		
出图签章		
Engineer Signature		

项目名称: 澳大利亚-集装箱
 图名: 电力布置图

工程编号	PT220307	专业	JZ
比例	1:100	图号	J0-7

未盖技术出图章 本图纸无效
 This drawing is valid only after being stamped and signed.